



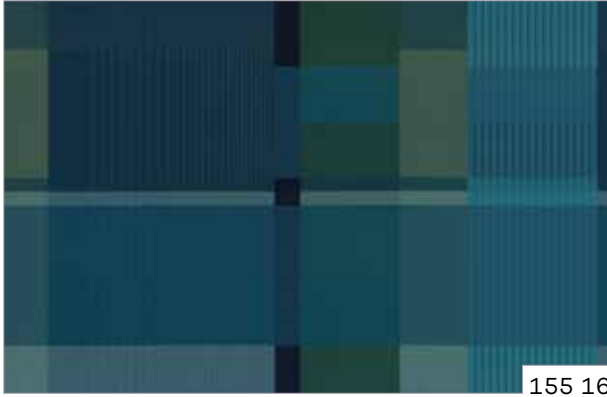
Farbabweichungen drucktechnisch bedingt. | Slight deviations in colour due to printing process.



**drapilux** Schmitz-Werke GmbH + Co. KG.  
Hansestraße 87 / 48282 Emsdetten / Germany  
T 02572.927 0 / F 02572.927 445 / M info@drapilux.com  
Box 1243 / 48270 Emsdetten / Germany  
T 49 2572.927 0 / F 49 2572.927 445 / M export@drapilux.com  
[www.drapilux.com](http://www.drapilux.com)

**drapilux**

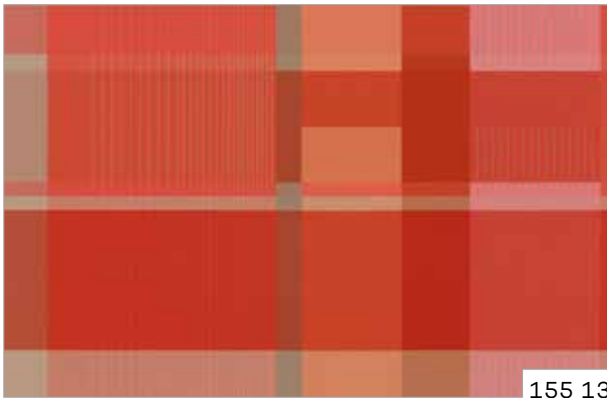
# drapilux 155



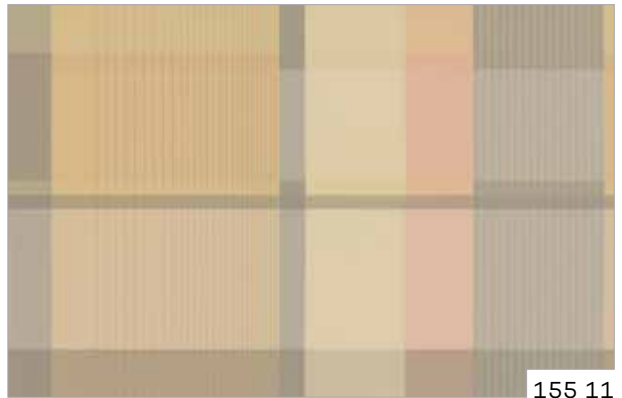
155 16



155 15



155 13



155 11



155 18

## Technische Daten:

DIN 4102 B1  
M1 Non Feu (B+F+E)  
Classe 1 (I)  
BS 5867 (GB)  
EN 13 773 class 1  
IMO Res. MSC.307  
(88)-(2010 FTP Code)

## Material:

100% Polyester (FR)  
◇ ca. 140 cm  
ca. 225 g/m<sup>2</sup>

## Rapport:

◇ ca. 92 cm x <> ca. 140 cm

Martindale: ca. 25.000  
DIN EN ISO 12947 - 2

Pilling: 3  
DIN EN ISO 12945 - 2



0736

**Oeko-Tex Standard 100**  
A96-0071 Hohenstein  
HTTI

## drapilux

eine Marke der Schmitz-Werke  
a brand of Schmitz-Werke  
une marque de la société Schmitz-Werke  
una marca di Schmitz-Werke

# drapilux